

HERITAGE PLACE

NAME OF PLACE: BRICK COTTAGE

ADDRESS/LOCATION OF PLACE: 93 McConochie Street COLERAINE

STUDY NUMBER: 076

HERITAGE OVERLAY NUMBER:

PRECINCT: Coleraine

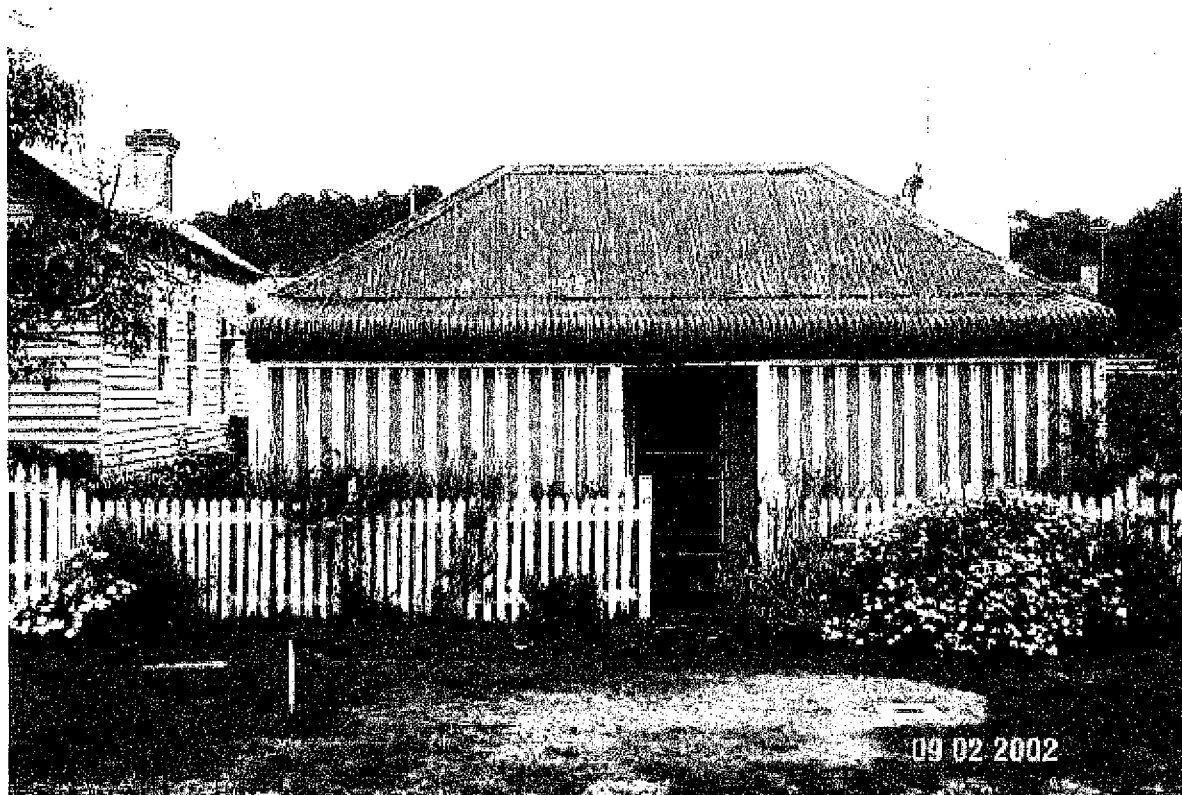
LOCAL GOVERNMENT AREA: Southern Grampians Shire

ALLOTMENT: 7 **SECTION:** 20 **PARISH:** PARISH OF COLERAINE

ACCESS DESCRIPTION:

CFA 430J C5; VicRoads 228 C10; located on the north side of McConochie Street, towards the western edge of the town.

SIGNIFICANCE RATING: Local



Brick Cottage, 93 McConochie Street Coleraine.

Image Date: 09/02/02

EXTENT OF LISTING:

To the extent of: 1. All the brick cottage and all of the land

HERITAGE PLACE

NAME OF PLACE: BRICK COTTAGE

ADDRESS/LOCATION OF PLACE: 93 McConochie Street COLERAINE

STUDY NUMBER: 076

HERITAGE OVERLAY NUMBER:

PHYSICAL DESCRIPTION:

The dwelling at 93 McConochie Street is a typical example of early 1860s brick cottage construction. The cottage is located toward the extreme edge of the allotment, addressing McConochie Street. The cottage is of four rooms, with a skillion attached to the rear. There are three chimneys, and a low corrugated iron hipped roof with no eaves. The brick work is painted and a bull-nose verandah runs across the front facade. The windows are typically twelve pane double hung sashes, symmetrically arranged on either side of the front door.

HISTORY:

The land on which the cottage at 93 McConochie Street now stands was purchased from the Crown by John Hutchins as Allotment 7 of Section 20 on August 5, 1862 (Township Plan Coleraine). It appears that Hutchins did not occupy or build on this land until 1866, as ratebooks prior to this date show his as owning and occupying a brick cottage on Allotment 8, Section 19 facing Pilleau Street (entry 261). Hutchins may have purchased this land from the initial owner, D. McKebery, who served as the second President of the Wannon Shire Council.

The Glenelg Rate books (entry 256) indicate that by 1866, Hutchins had built a brick cottage on the Allotment 7, Section 20 facing McConochie Street. Troeth (92) notes that these cottages appear in the photograph entitled 'The west end of Coleraine 1866'.

John Hutchins married Mary Ann Patching in 1864 (VPI, Reg. No 93), and between 1865 and 1887 they had 13 children, 9 of whom were Male. The Hutchins family still strongly represented in the township of Coleraine and surrounding areas. There are a large number of Hutchins (all descendants of John Hutchins and his brother George) in the Coleraine cemetery. John Hutchins died in 1909 at the age of 69, and the family continued to live in the cottage at 93 McConochie street until at least this time. Little is known about the history of this building or its occupants in the later twentieth century.

THEMATIC CONTEXT:

Theme 4: Building settlements, towns and cities

4.5 Making settlements to serve rural Australia

CONDITION:

The cottage is in very good condition.

INTEGRITY:

Reasonable integrity

STATEMENT OF SIGNIFICANCE:

What is significant?

The brick cottage located at 93 McConochie street is a simple, symmetrical single storey brick cottage located three blocks south of the main street of Coleraine. The cottage is a simple painted brick cottage with a skillion attached to the rear of the building. The low roofs are hipped with no eaves and a bull-nose verandah runs along the facade of the cottage, supported by simple timber posts with capitals. The cottage is in fair condition and retains a fair degree of integrity.

How is it significant?

The brick cottage at 93 McConochie Street is of historical significance to the township of Coleraine and the Southern Grampians Shire.

Why is it significant?

93 McConochie Street is of historical significance as a rare surviving example of early brick cottages in the residential area of Coleraine. It is one of three surviving examples of an early type of dwelling constructed by

HERITAGE PLACE

NAME OF PLACE: BRICK COTTAGE

ADDRESS/LOCATION OF PLACE: 93 McConochie Street COLERAINE

STUDY NUMBER: 076

HERITAGE OVERLAY NUMBER:

the first settlers. The use of locally manufactured bricks demonstrates an early industry and trade in the town. It is historically important for its associations with an early family in Coleraine, the Hutchins, who are still well represented within the township

COMPARISON:

025 71 Pilleau Street COLERAINE

ASSESSED BY: AEN

ASSESSMENT DATE:

01-Oct-02

EXISTING LISTINGS:

Name

Southern Grampians Shire Planning Scheme

HERITAGE STUDY RECOMMENDATIONS:

Include in VHR **Include in RNE** **Include in Local Planning Scheme**

No Recommendations for Inclusions

REFERENCES:

Author	Title	Year	Page
Department of Justice Victoria	Pioneer Index Victoria 1836 - 1888	2001	
Department of Lands and Survey	Township of Coleraine (Parishes of Coleraine and Konong Wootong County of Dundas)	1873	
Department of Lands and Survey	Township of Coleraine (Parishes of Coleraine and Konong Wootong County of Dundas)	1955	
Glenelg Shire Council	Glenelg Shire Ratebook January 26, 1865	1865	e. 261
Glenelg Shire Council	Glenelg Shire Ratebook December 30, 1867	1867	256
Shire of Wannon	Shire of Wannon Ratebook 1899-1900	1900	e.132
Troeth, Malcolm	The Cultural Landscape of Coleraine	1988	92-3