

Legend

Bollard

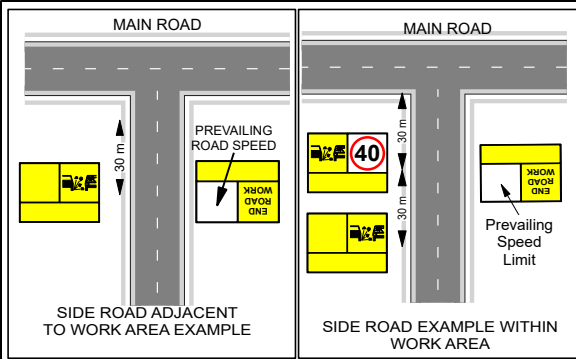
Detour Route

Sign Location (Single)

Traffic Controller

Work Area

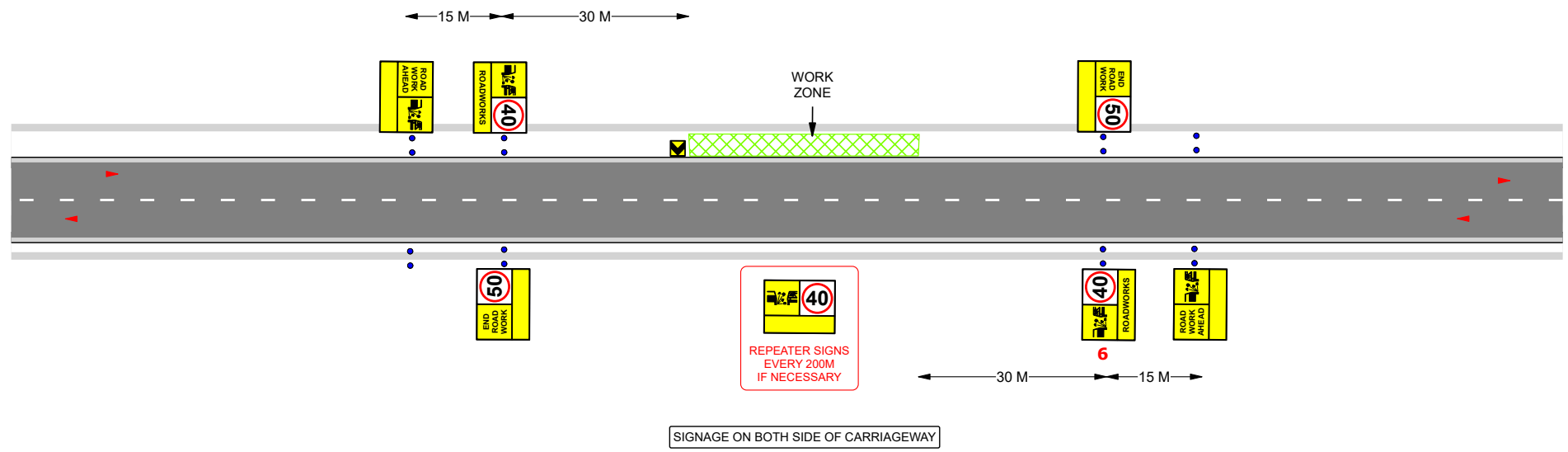
	Date: 24/07/2025		Plan Number #:	Rev:	Date:	Description:	Drawn:	Direction:	Emergency Contacts:	Disclaimer:
	Location: White Ave, Hamilton		Ontrack Civil Earthworks - White Ave, Hamilton (Stormwater Pipe Replacement) - TGS 3316 v1.0	1.0	24/07/25	Initial Draft	A.K		EMERGENCY - 000 or 112 VIC ROADS TMC - 13 11 70 METRO - 9619 1111 PTV - 1800 800 007 YARRA TRAMS - 9610 3376	This Traffic Guidance Scheme (TGS) is not to scale. Signs and positions illustrated on this TGS are to be used as a guide only, and may need to be adjusted onsite by a qualified traffic controller(s) ONLY. Arborrowe Trees & Traffic (ARTT) will accept no responsibility for non-compliance if or when, the TGS is implemented by others in lieu of ARTT. This TGS is fully compliant with Australia Standards 1742.3 - 2019, CoP 2023 & AGTTM Parts 1-10.
	Municipality: Southern Grampians Shire Council	Recommended print size: A3 LANDSCAPE	Type of Works: Utility Works							
	Melways Ref:	MOA Req N/A	Client:							
	Author: Andrew Kyriakou Author ID : 68308	Author: Andrew Kyriakou Author ID : 68308	Ontrack Civil Earthworks							



- TRAFFIC CONTROLLER INSTRUCTIONS:**
1. Contact TMC 1300 107 757 to activate MOA (If Applicable)
 2. Always remain vigilant to your surroundings when implementing and dismantling all traffic control devices.
 3. Note any changes to TGS in use on the plan, give reasons on SWMS, all traffic staff on site must sign onto the SWMS
 4. Drive through site and check signage is visual from drivers perspective.
 5. Use radios to communicate, traffic flow may be stopped for work site movements.
 6. Monitor signage regularly, weigh down signs in windy weather.
 7. Stay safe and remember your escape zone.
 8. Implement and dismantle devices according to Code Of Practice.
 9. Contact 1300 107 757 to deactivate MOA at conclusion of shift.
 10. Priority must be given by Traffic controllers and workers to all Emergency Vehicles.

Contact Numbers:

Emergency Services:	000
Vic Roads TMC:	1300 107 757
Public Transport Victoria:	1800 800 007
Work Safe:	13 23 60



Legend

- Safety Zone
- Cone
- Traffic Direction
- Work Area