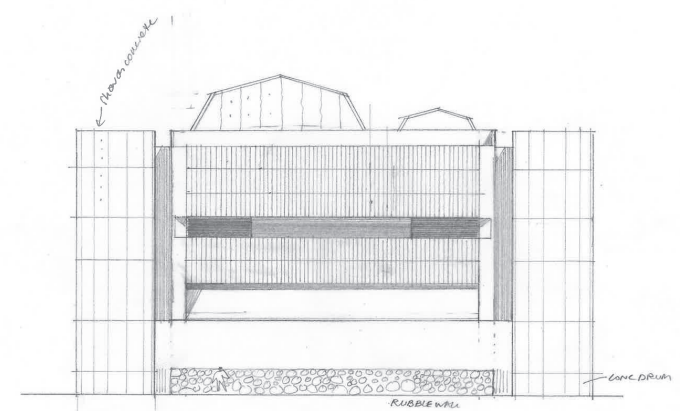


DRAFT

HG HAMILTON
GALLERY



NHG New Hamilton Gallery

Concept Design Summary

Public Display 3 June - 20 June 2025

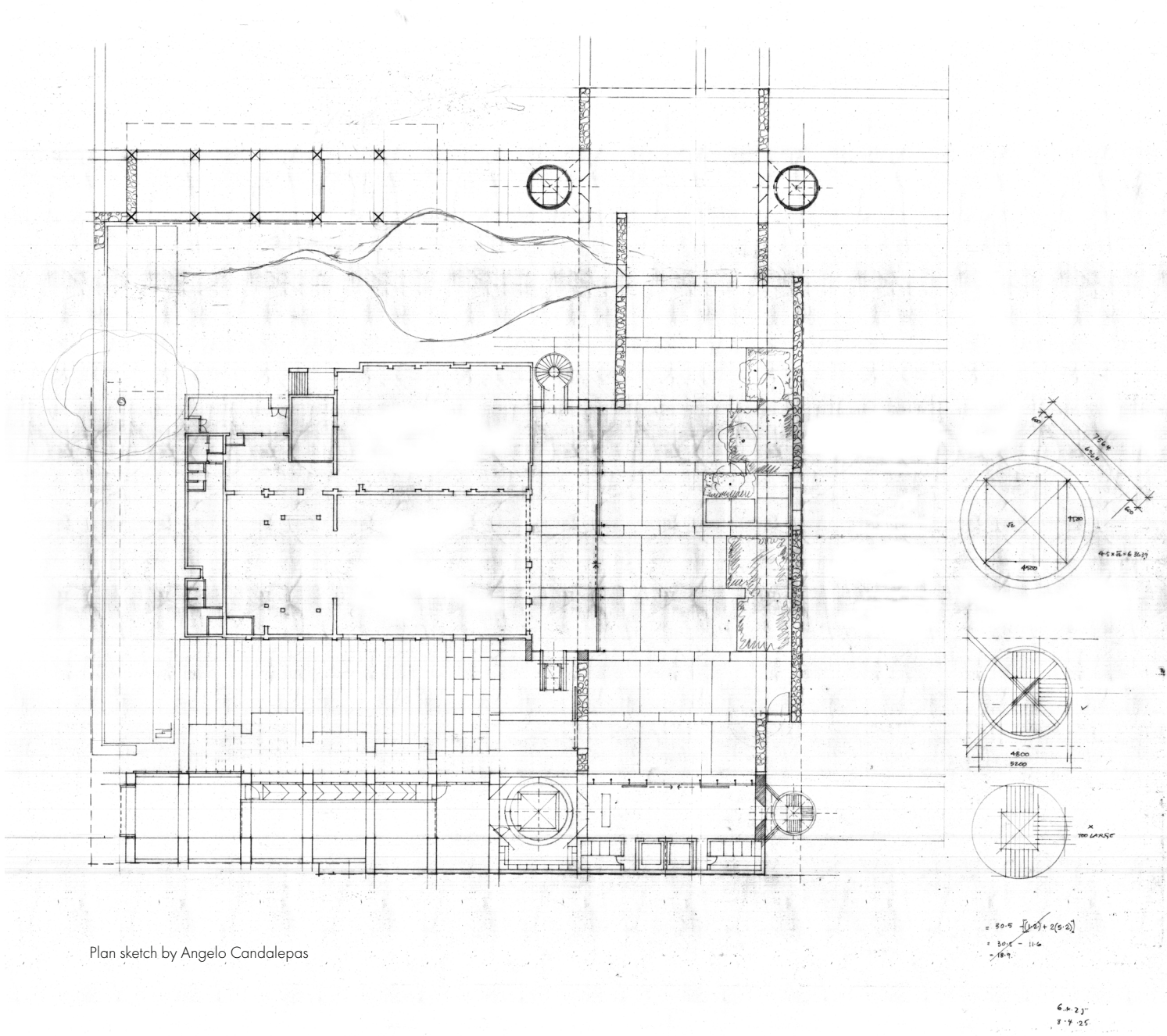
Angelo Candalepas and Associates

Acknowledgement of Country

The work shown in the following document is situated on the traditional lands of the Gunditjmara, Tjap Wurrung, Jardwadjali and Buandig people. The offices of Candalepas Associates sit on Gadigal and Wurundjeri Country. We acknowledge the care taken by the traditional custodians of this land over thousands of years. We pay our respect to their Elders and honour their profound understanding of the environment.

We are committed to building a future that acknowledges and respects the deep connection between people, culture, and place. Let us learn from the traditional custodians, ensuring that our designs contribute to the ongoing guardianship of the environment and foster a sense of connection to Country.

May our efforts here today, and in all our projects, value the rich heritage of this land and contribute to an inclusive and sustainable future for all.



Plan sketch by Angelo Candalepas

Introduction from SGSC Mayor

Cr Dennis Heslin



HAMILTON GALLERY CONCEPT DESIGNS AN INVESTMENT IN THE FUTURE

“The New Hamilton Gallery reflects the aspirations of our community – it’s a space shaped by the public voice and developed in collaboration with Australia’s best architects.”

It is with great pleasure that I present the concept designs for the new Hamilton Gallery. This project has had a long journey with many contributing and working tirelessly and now, we are on the precipice of this transformative building becoming realised.

Firstly, I would like to thank the community, as hundreds of people participated in the co-design sessions from children to seniors. Thank you for expressing your excitement and sharing your ideas and I want to reiterate; you spoke, we listened, and you have truly made an impact on the designs.

I want to congratulate my fellow Councillors who have been completely supportive of the process, design and project. The staff who have worked on this project, thank you for your ongoing efforts. Lastly, I must applaud the architects, Angelo Candalepas and Associates (ACA) as we set an ambitious challenge, I believe the saying is I want my cake and eat it too, and you delivered beyond our expectations.

This new building is extremely impressive. It will transform the region and be of benefit for future generations. It enhances the audience experience, lowers operational costs and maintenance and will increase economic benefit to the Gallery and region.

The current building is at its end of life, the architects undertook a significant analysis of the site and building, which can be found in the detailed concept design report. It is nowhere near adequate or fit for purpose.

Hamilton Gallery has an internationally significant collection and recently loaned artworks to Mona, the National Gallery of Australia and Art Gallery of South Australia. These designs leverage this astounding cultural asset for the benefit of the community.

The community deserves a new gallery, it was the driving force behind the original gallery’s creation and has continually supported the growth of the collection. These designs are a fitting tribute to such a dedicated community. We also know that following the Emerging From Darkness exhibition, which drew crowds from across the country and led to a record increase in tourism, boosting visitor spending by over \$1 million per month, this new gallery has the potential to sustain that level of success.

While we acknowledge that the preliminary cost plan is slightly above \$40m, the councils contribution will remain capped at \$10m. Furthermore, the architects have put forward several ways to manage the budget, such as staging the project, modifying aspects of the design, utilising more cost-effective materials, or increasing private funding. It is also important to note that this project has always relied on external funding. Therefore, any costs exceeding the \$40m allocation will not affect the council’s \$10m contribution.

I invite the entire community to review and comment on these designs as this is an important stage in shaping the outcome of this ambitious and intergenerational project.

Feedback & Questions

The community has created these designs in collaboration with the architects and now we want to know what you think.

Please click the link below to give your feedback:
<https://www.cognitoforms.com/SouthernGrampiansShireCouncil/NewHamiltonGalleryConceptDesignFeedback>

Recent Timeline Overview

- May 2023 - Community consultation was undertaken in collaboration with the University of Melbourne Design School to develop the Architectural Tender pack.
- July 2024 - Council endorsed the the budget which includes design costs (Council later successful in obtaining Federal Government Grant to fund design)
- July 2024 - Design Tender is endorsed by Council
- July 2024 - Tender is released
- August 2024 - Tender Closes
- September 2024 - Angelo Candalepas and Associates are endorsed and awarded the architectural contract
- December 2024 - Co-design Commences
- March 2025 - Co-design finalised
- June 2025 - Public Display and Comment of Concept Plans

Costing

Although the preliminary cost plan is slightly above \$40m, the councils contribution is capped at \$10m. Furthermore, the architects have put forward several ways to manage the budget, such as staging the project, modifying aspects of the design, utilising more cost-effective materials, or increasing private funding. It is also important to note that this project has always relied on external funding. Therefore, any costs exceeding the \$40m allocation will not affect the council’s \$10m contribution.

Principles

Through community engagement and in collaboration with the University of Melbourne in May 2023 the following seven principles were developed and served as the core vision for the tender:



1. Importances of local identity
Understand and articulating key aspects of Hamilton's story and its evolving identity.

2. Importance of civic life
Creating a place for the people of Hamilton, inclusive of all backgrounds. A creative space celebrating innovation in all its forms and plays an active role in contemporary debates.



3. Strengthening creative pathways
Opportunities for creatives to see themselves as part of the gallery. Supporting the development of creative youths, emerging artists, and established professionals. Nurturing creative interests and providing educational and career pathways.



5. Referencing the natural environment
The gallery recognises the wider landscape context and is a place to make sense of multiple narratives about ecosystem, culture and history.



6. Respecting and acknowledging First Nation cultures
Through Indigenous-led representation, Hamilton Gallery determines the most appropriate way to acknowledge this history, and to celebrate the continuous cultures of First Peoples in the area.

7. Establishing and developing connections
By collaborating with surrounding institutions such as the Performing Arts Centre and the cinema, Hamilton Gallery contributes to a vibrant public realm. Multi-programmatic cultural experiences expand its audience.

Co-Design (December 2024 - March 2025)

The co-design phase which took place between December 2024 and March 2025 is a collaborative design approach. The architects engaged directly with the community to capture the views and ideas of multiple stakeholders: from gallery staff to community groups, artists to school children.

Number of Sessions that Ran

Demographic	Number
SGSC: Staff, Councillors	7
Creatives	1
General public	4
First Nations	2
Students, Kids and Families	3
Businesses	2
Foundation	2
Total:	21

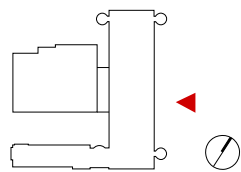
Co-Design Attendees

SGSC: Staff, Councillors	58
Creatives	16
General public	122
First Nations	7
Students, Kids and Families	50
Businesses	5
Foundation	3
Total:	261

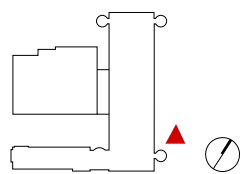
Key Themes - Co-Design

Garden	Café	Collection and Exhibition Space	Connecting Culture	Design
Wants native planting	Location	Significant increase of collection storage	Connection between visual and performing arts	Need to use local materials
Creating accessible spaces for kids and families	Model – leasing	Ease of install / deinstall	Create a precinct for the arts	Accessible entry to gallery
Undercover space to bring kids in winter		Ability to display a variety of artworks	Blending nature, arts and building	A space that is multipurpose for programs, meeting spaces, exhibitions, safe spaces

View from Brown Street.



View looking north along Brown Street.



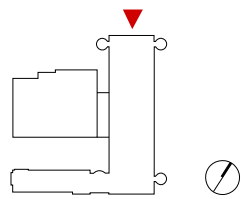
DRAFT

Candalepas Associates





View looking south.

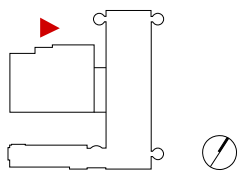


DRAFT

Candalepas Associates



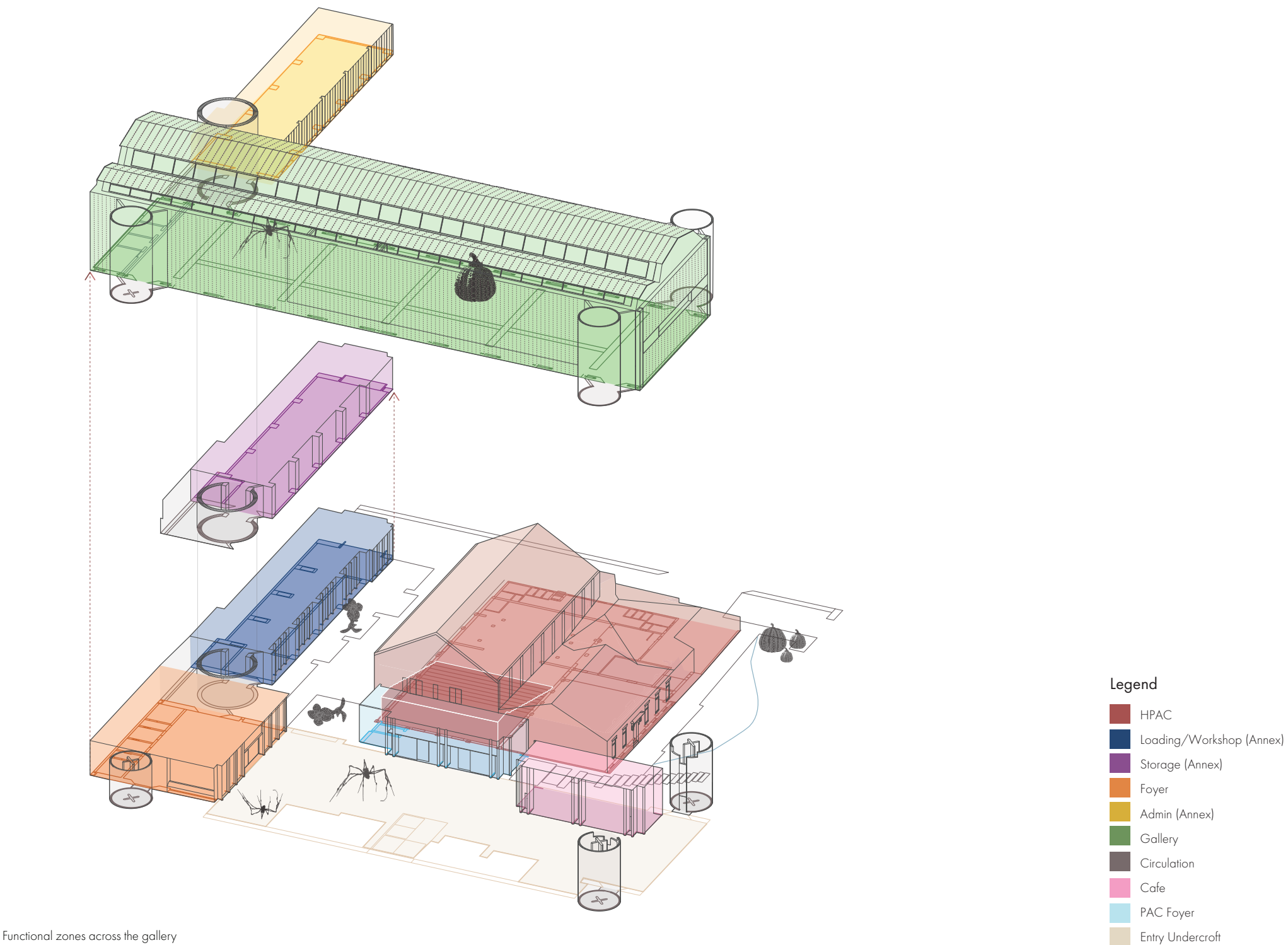
View looking east.



DRAFT

Candalepas Associates

Gallery Functionality





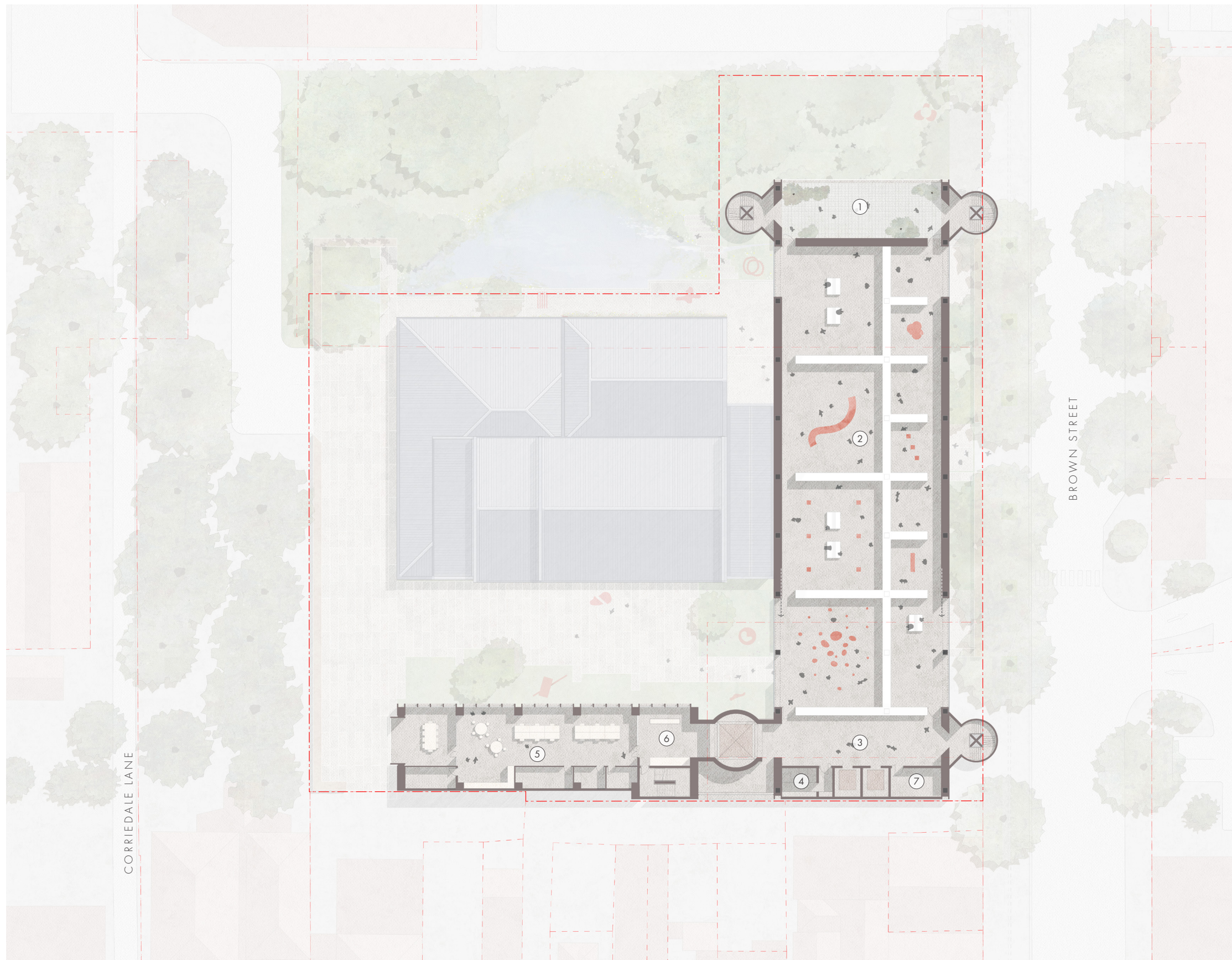
Context Plan

1. Gallery (Exhibition)
2. Gallery (Annex)
3. Performing Arts Centre (PAC)
4. Vehicle Access
5. 72 Lonsdale Street
6. 118 Brown Street (McDonald's)
7. 108 Brown Street (Coles)
8. 179-193 Gray Street

0 5 10 20 40m



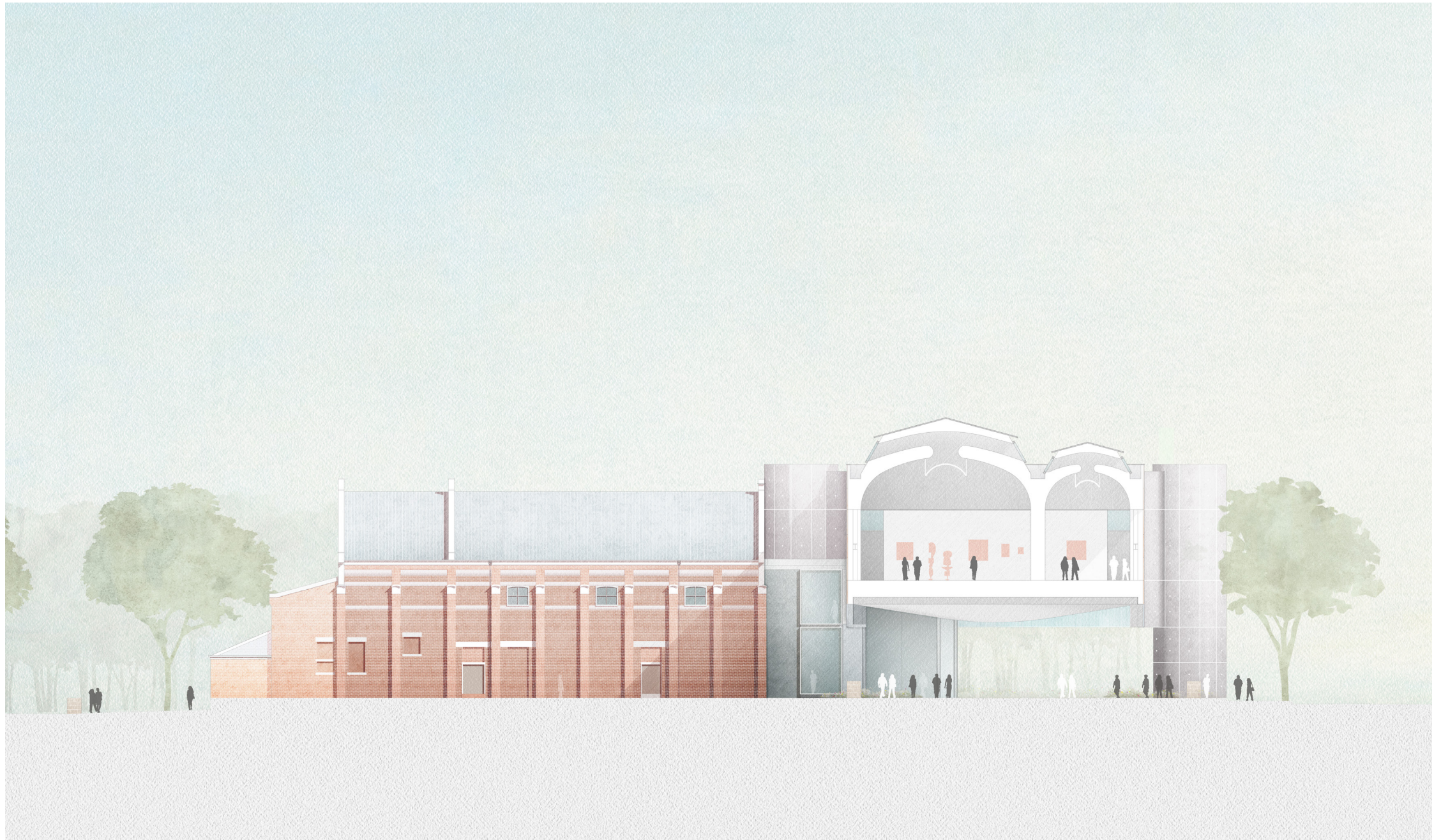
1:1000



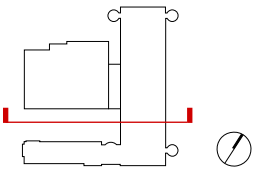
Level 1 Plan

1. Terrace
2. Main Gallery
3. Gallery Lobby
4. Amenities
5. Administration / Office Space
6. Reception
7. Plant

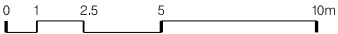
1:500

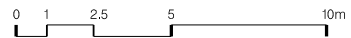
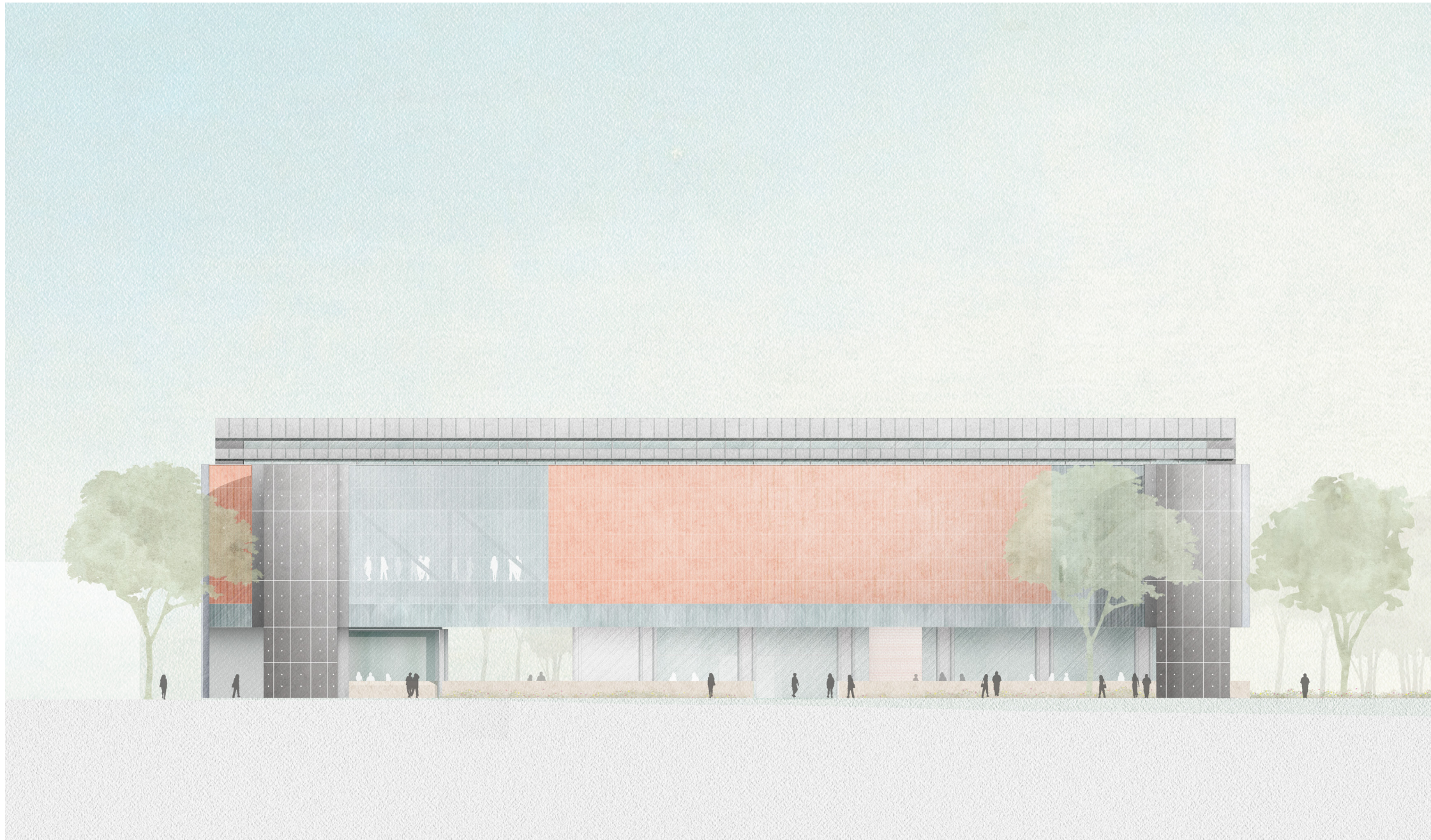


Section A

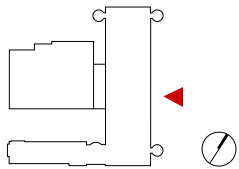


1:250

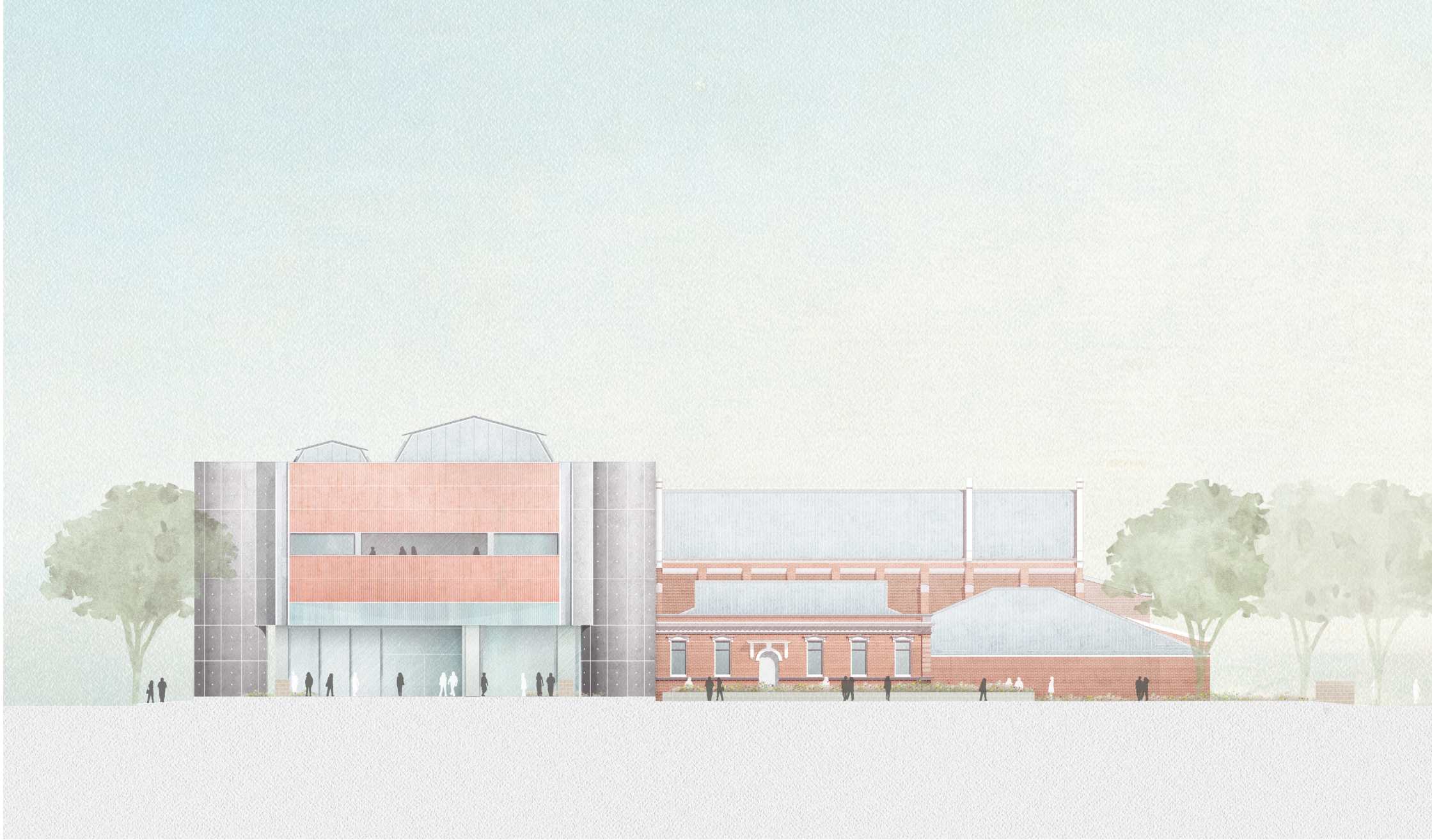




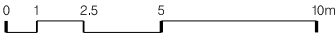
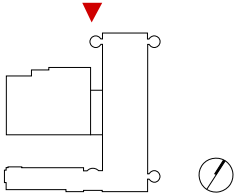
East Elevation



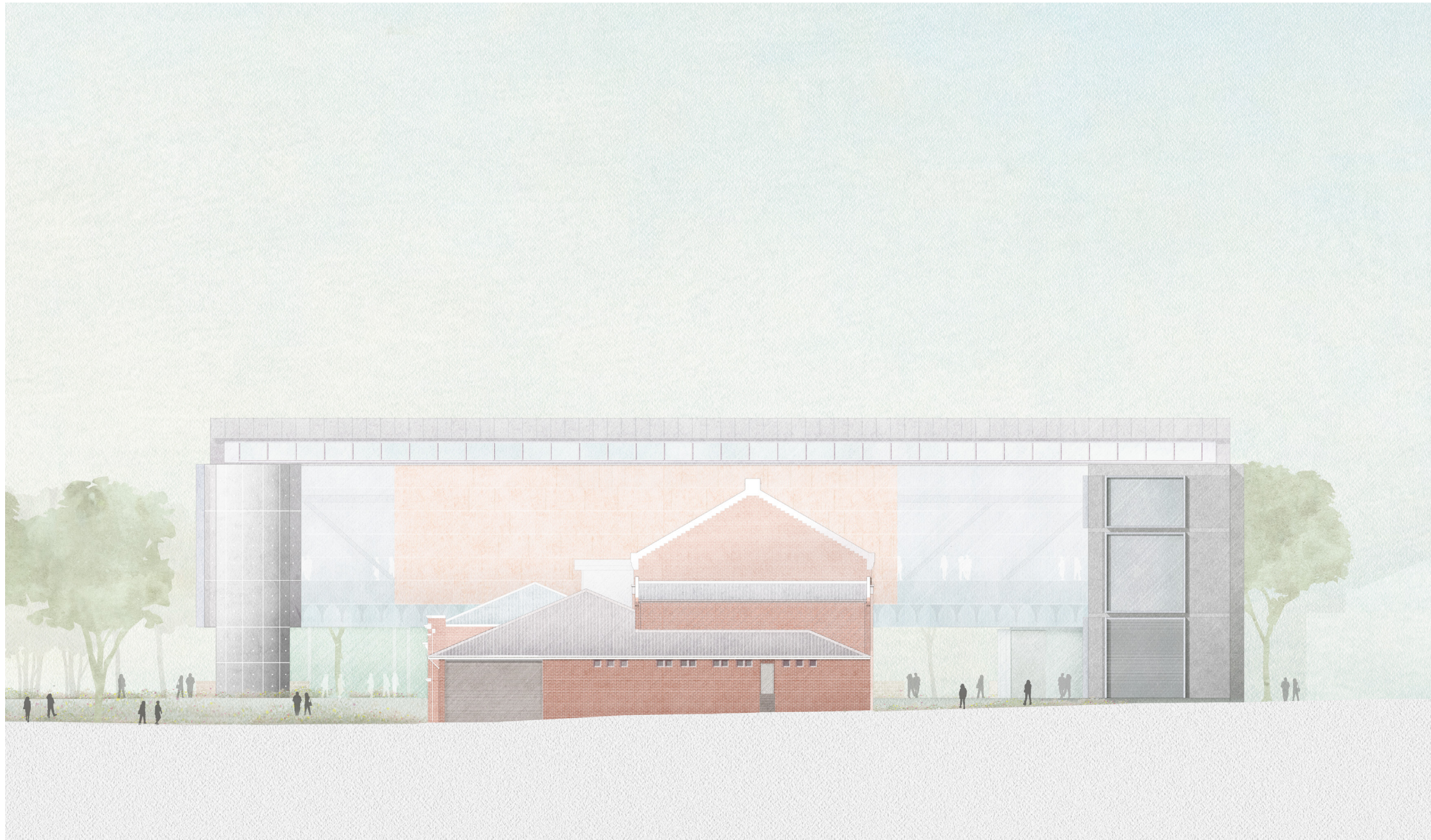
1:250



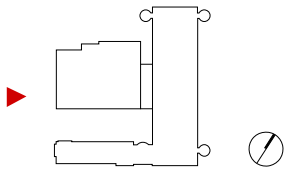
North Elevation



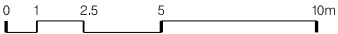
1:250



West Elevation



1:250



DRAFT

HG HAMILTON
GALLERY



NHG New Hamilton Gallery

Concept Design Summary

Public Display 3 June - 20 June 2025

Angelo Candalepas and Associates