

The Southern Grampians Shire Council has commenced preparation of the Grampians Significant Landscape Assessment. The study will evaluate the visual character and significance of the Grampian's landscape, and prepare up to date planning policy and guidance to ensure the landscape's protection, while encouraging appropriate development, economic growth and investment.

### THE SOUTHERN GRAMPIANS SIGNIFICANT LANDSCAPE ASSESSMENT WILL:

- Define and describe (with photos and maps) the visual landscape character of the Grampians region
- Determine which areas of the Grampians, and which views and vistas, are the most significant and why
- Seek and include the community's values on the character and significance of the Grampians landscape
- Assess and evaluate various forms of development that have occurred in the landscape; some of which will be positive, and others which may have detracted from the significance of the area
- Consider using policies and guidance in the planning scheme (such as the Significant Landscape Overlay) to protect and manage the Grampians landscape into the future

The above tasks will be approached with an understanding that the landscape is an important economic driver for tourism and agriculture, and that its protection and management should contribute to a vibrant local economy.

## INVITATION TO A COMMUNITY WORKSHOP

### Contribute Your Ideas to the Landscape Assessment

- Date:** Thursday 16 June 2011
- Time:** 6:00pm to 8:00pm
- Location:** Cavendish Town Hall, Barker Street, Cavendish
- Please **RSVP:** by Friday 10 June to Melanie Williams.  
Ph:5573 0204 or email:  
mwilliams@sthgrampians.vic.gov.au



### YOUR CONTRIBUTION IS IMPORTANT!

As part of the project, we want to gain a better understanding of the community's perceptions and values about the Grampians landscape.

As a starting point, consider the following:

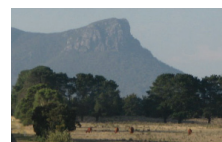
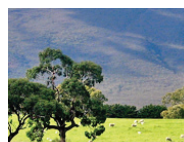
- Where would you take a visitor to show them the best view of the Grampians landscape?
- Which feature, place or view is most significant, and why?
- Which area of the Grampians is most scenic or beautiful, and why?
- Is there a feature, place or view that is unattractive, or has been spoiled, and why?

Bring your photos and ideas along to the Community Workshop for discussion or email: [grampianslandscape@gmail.com](mailto:grampianslandscape@gmail.com) at any time to share your ideas.

### PROJECT BLOG

A blog has been created to tell the story of the project as it evolves. This is a space to share photos or make a comment, even if you can't attend the community workshop. You may also check it to receive updates on the progress of the project. Find it at:

<http://grampianslandscape.blogspot.com>



## STUDY PROCESS

The Southern Grampians Landscape Assessment will be prepared in four stages over the coming months, with a draft document available for community comment in December 2011.

<b>Stage 1</b>	Background & initial community input	May - June 2011
<b>Stage 2</b>	Landscape character assessment	July - September 2011
<b>Stage 3</b>	Landscape significance assessment	September - November 2011
<b>Stage 4</b>	Final recommendations	December - January 2010 (Formal exhibition will be later in 2012)

## HOW TO BE INVOLVED

There will be different ways in which you can contribute throughout the course of the project:

Attend the **Community Workshop** in Cavendish on 16 June 2011

Post comments or photos on our **blog**:  
<http://grampianslandscape.blogspot.com>

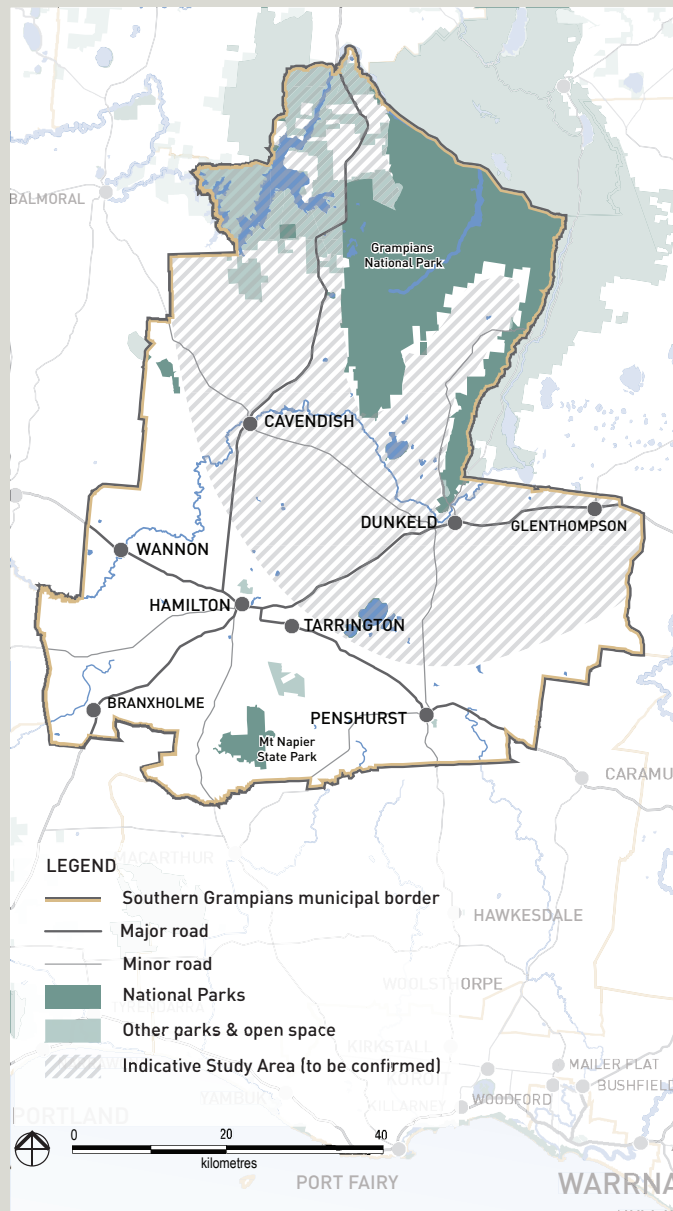
**Email or send in** photos and comments at any time  
[grampianslandscape@gmail.com](mailto:grampianslandscape@gmail.com)

**Keep in touch** with the progress of the project via Council's website :  
[www.sthgrampians.vic.gov.au/grampianslandscape](http://www.sthgrampians.vic.gov.au/grampianslandscape)

**Provide your feedback** to the draft Landscape Assessment when it is released in December 2011



## THE STUDY AREA



The Study Area is the surrounds of the Grampians National Park, but is expected to vary due to topography, landscape features and views, and will therefore be clearly defined at the beginning of Stage 2 of the project. At this stage, an indicative study area of 20km radius from the national park boundary has been defined as the preliminary study area.

## MORE INFORMATION

To register your interest in receiving regular updates on the progress of the project, or if you have any queries, please contact Tom Scholfield by phone 03 5573 0218 or email [tscholfield@sthgrampians.vic.gov.au](mailto:tscholfield@sthgrampians.vic.gov.au).